

# USB CAT - CAN Analyzer Tool

Validated by  
**GM**

## One Solution for GM's Automotive World

### Hardware & Software

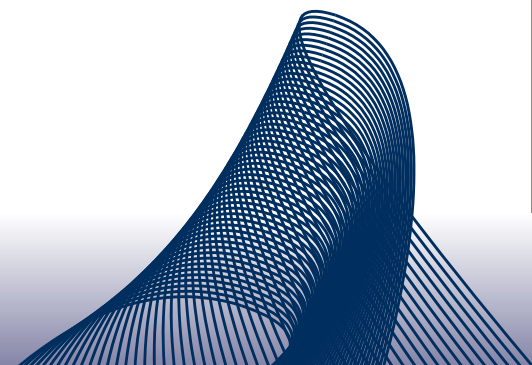
GMLAN Diagnostics  
Single Wire CAN  
Flightrecorder-Mode  
No loss of data while recording?

### Optimized price and performance ratio

Easy configuration  
Different APIs for own applications  
Support of Standard Diagnostic Software (J2534, J2534-1)



The USB CAT is based on the proven CAT hardware.



## CAT

## Hardware

- 100% busload at 1MBit/s
- Access to 3 busses: HS, MS, LS (SWCAN)
- On- board data (pre- ) processing

## CAT

## Software

- clear Monitoring of signals and frames
- easy and quick configuration
- extended filter- and trigger conditions
- diagnostic- or process data online or offline
- no loss of data during recording
- up to 30 transmit frames
- 200 Signals configurable

## Software

## Add Ons

- XS Sequencer for easy simulation of systems
- PassThru (J2534, J2534-1) applications can be connected to a vehicle via CAT
- LevelX as universal I+ME SW interface
- Easy LevelX for connection to Labview
- XS CAT OPC Server utilizes the standardized OPC interface



## Technical Data

### General Characteristics

Transfer rate CAN : up to 1 MBit/s  
 Performance : 100% busload at 1 MBit/s  
 Dimension : 98mm x 41mm x 20mm  
 Power supply : external 6.5 to 16 VDC  
 via CAN Bus (24V version available)  
 Temperature range : 0 bis +70° C  
 Processor type : C165, @ 18,432 MHz

### Vehicle

connector : 9- Pin SubD with  
 GM- spec. pinning  
 Protocol Interface : SJA 1000, CAN 2.0B active  
 Physical. Interface : CAN 1: ISO 11 898 (82C251)  
 CAN 2: ISO 11 898 (82C251)  
 CAN 3: SWCAN (GMW 3089)

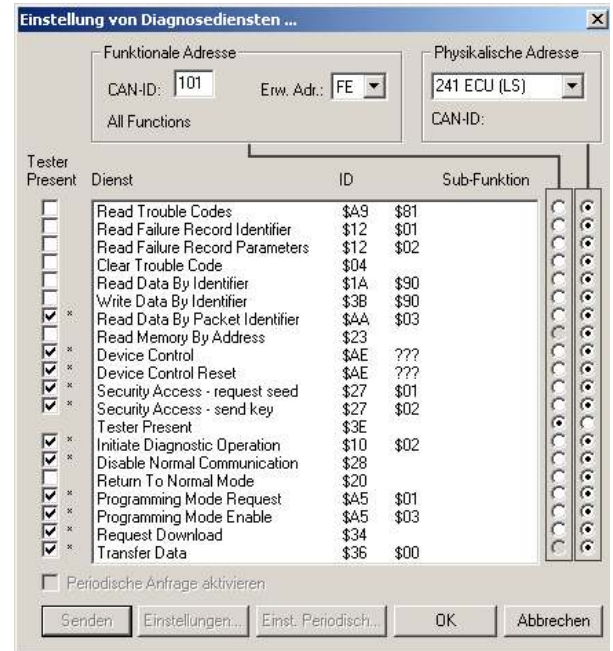
### PC

connection : via USB 1.1 adapter cable  
 operating system : Windows 98, NT, 2000, XP

## GM

## Diagnostics

- 20 implemented GMLAN diagnostics services
- Exchange of information in html format
- Permanent adaption to specification and requirements



## Order Information

### Product includes



- USB CAT hardware
- USB adapter cable
- CAT Software on CD- ROM
- Installation guide

### On request

USB CAT	IME 3502 406
USB CAT (only for GM Group)	IME 3502 405

**Optional :**  
 CAT connector cable COM- Port      IME 3501 701

**GM Diagnostics cable :**

2 m cable to DLC- 16- Pin	TGD 3501 702
4 m cable to DLC- 16- Pin	TGD 3501 703
2 m cable pigtail	TGD 3501 704
4 m cable pigtail	TGD 3501 705
DLC- 16- Pin Y- Adapter	TGD 3501 706

**Additional software products :**

XS Monitor	IME 3901 302
XS Sequencer	IME 3901 303
PC CAN Control	IME 2902 303

**Supported APIs :**

CATI API	IME 3501 301
PassThru API	IME 3902 501
XS OPC Server	IME 3501 303
LevelX API	IME 2909 301
Easy LevelX for LabView	IME 2912 301

I+ME ACTIA GmbH  
 Rebenring 33  
 38106 Braunschweig  
 Germany

Tel : + 49 (0) 531 38 70 1 0  
 Fax : + 49 (0) 531 38 70 1 88  
 www.ime-actia.com  
 mail: info@ime-actia.de

Local US Support:  
 Tel : +1 (734) 266- 2083  
 Fax : +1 (734) 266- 2087  
 mail: info@actia.com

