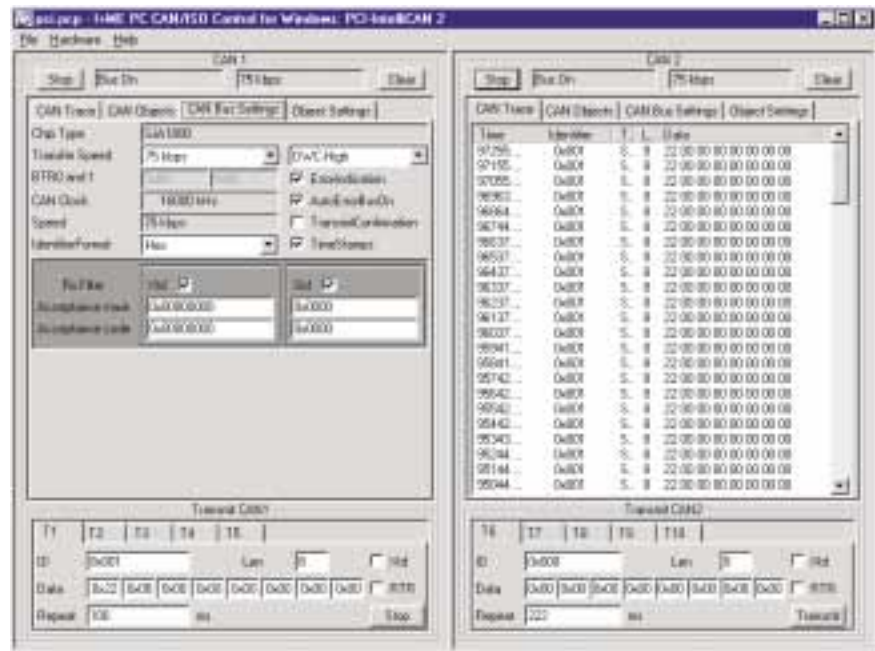


# PcCANControl

**P**cCANControl is an easy-to-use analyse tool that displays data transfers over the CAN field bus.

PcCANControl is available for Windows 9x, NT and Windows 2000.

Features transmission of cyclic messages / remote frames, setting of display filters, and exports collected data into an text-file (ASCII).



## FEATURES

- Supports all I+ME ACTIA PC Interfaces
- Runs under Windows 9x, NT and Windows 2000
- Enables system modeling and the testing of networked systems as well as application support
- Supports CAN 2.0 A and CAN 2.0 B protocols
- Supports new ISO 9141 protocols.
- Transmits Remote-Frames depending on the CAN chip type

## HIGHLIGHTS

- Simple installation, easy to handle operation
- Exports all traced CAN messages to file.
- Displays up to two CAN channels simultaneously.
- Five different transmit objects can be defined for one-shot or continuous message transmission.
- Displays the selected CAN objects for special control.
- Selectable time-stamp generation for message history on the CAN network.
- free for nearly all new I+ME ACTIA interfaces