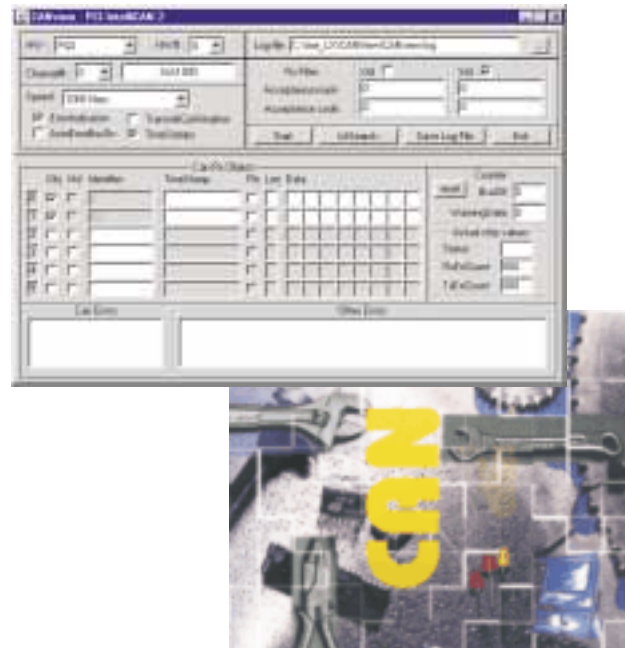


Pc CAN View

PcCAN View is an easy-to-use analyse tool that displays data transfers over the CAN field bus.

PcCAN View is based on I+ME LevelX API-driver, so it is possible to use it with all I+ME hardware. In this case, it is natural that it can be used under Windows 9x, NT and Windows 2000.

Features setting of display filters, and exports collected data into a text-file (ASCII).



FEATURES

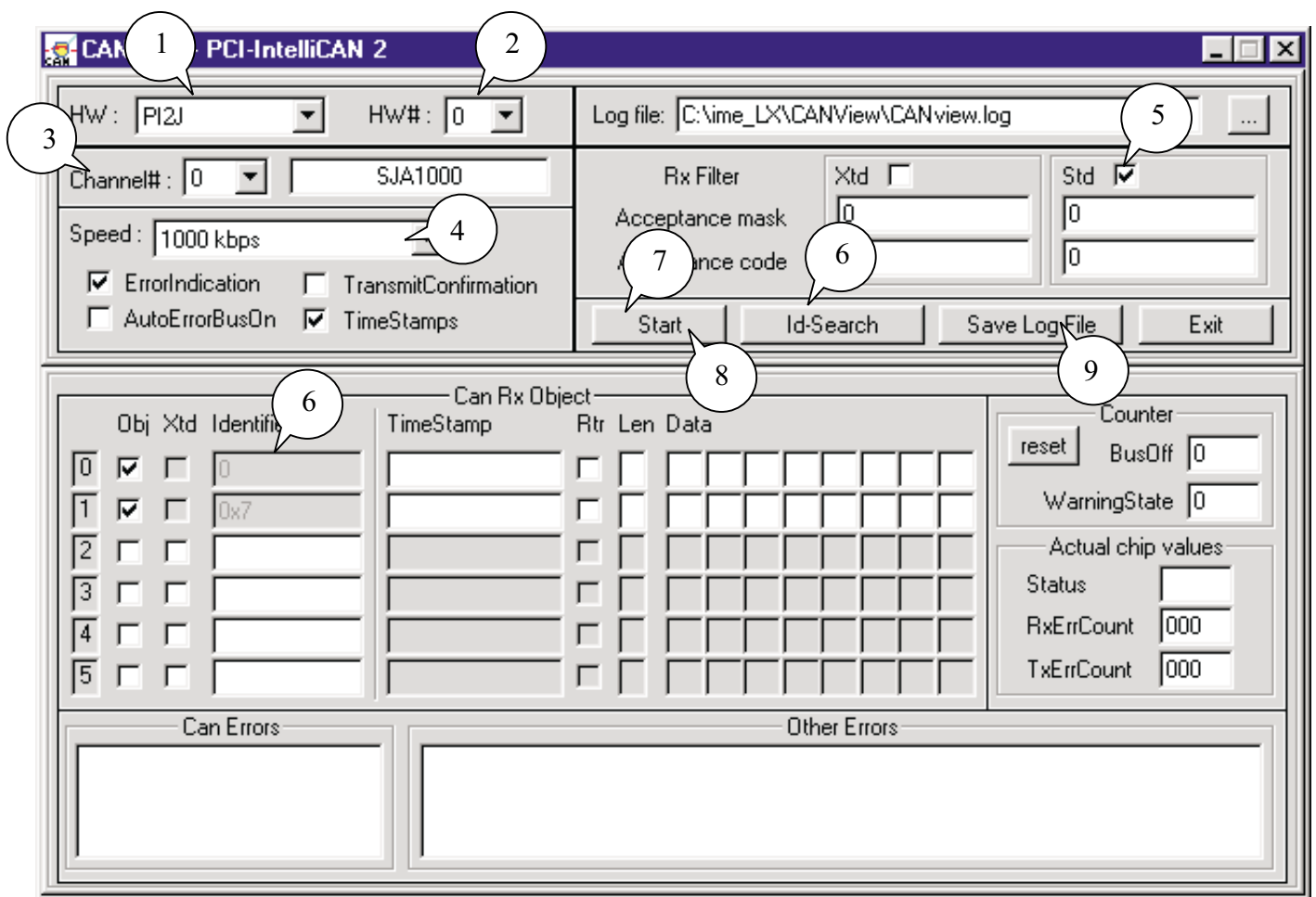
- Supports all I+ME ACTIA PC Interfaces
- Runs under Windows 9x, NT and Windows 2000
- Enables quick testing of networked systems

HIGHLIGHTS

- Simple installation, easy to handle operation
- Exports all traced CAN messages to file.
- Displays of each CAN channels possible.
- Automatically remember of last configuration settings
- Five different objects can be defined to follow there datatransfer
- Easy to obtain first sendet IDs via ID-Search button
- Selectable time-stamp generation for message history on the CAN network.
- Free for nearly all new I+ME ACTIA interfaces because using LevelX API

Small instruction guide

- 1.) Choose hardware (e.g. PY2S for Netporty II / see LevelX manual)
- 2.) Choose port number (e.g. 0 for COM1)
- 3.) Choose CAN-channel (... if hardware has more then one)
- 4.) Choose baudrate (e.g. 75 kbps)
- 5.) Select ID type (e.g. Std in most cases)
- 6.) Choose identifier or press "ID search" button
- 7.) Start now



- 8.) Stop running CAN
- 9.) Press "save LogFile" if you want to save your data (generate a txt file)