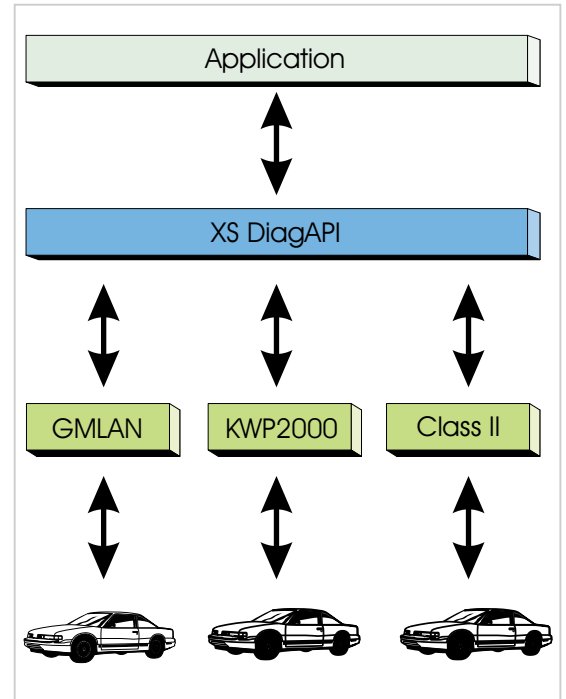
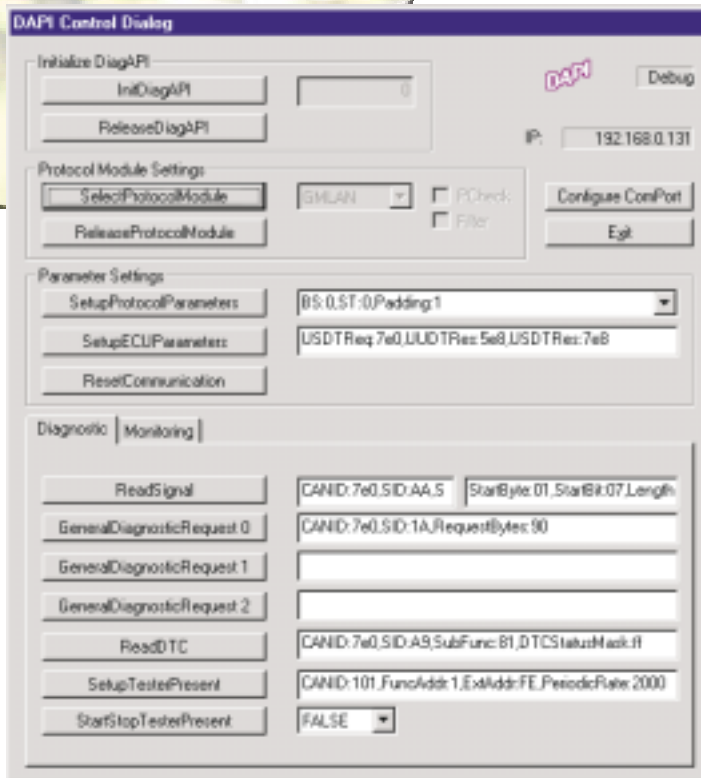


XS DiagAPI



HIGHLIGHTS

- one API for often used communication protocols
- applicable for several products from XS-product range
- available for 32 Bit Windows operating systems
- many services for GMLAN, Class II and KWP2000 are implemented in our diagnosis modules
- a CAN monitor module to monitor your CAN data with the features of filter- and trigger functions is also implemented

FEATURES

- support of:
 - initiate diagnostic operation
 - read diagnostic trouble Code
 - clear diagnostic trouble Code
 - tester present
 - read data
 - write data
 - ...and many more
- XS DiagAPI is developed under Visual C++ 6.0

DETAILS

Supported GMLAN diagnosis services

○ Clear Diagnostic Information	Service ID 04 (hex)
○ Initiate Diagnostic Operation	Service ID 10 (hex)
○ Read Data by Identifier	Service ID 1A (hex)
○ Return to Normal Operation	Service ID 20 (hex)
○ Read Memory by Address	Service ID 23 (hex)
○ Dynamically Define Message	Service ID 2C (hex)
○ Write Data by Identifier	Service ID 3B (hex)
○ Tester Present	Service ID 3E (hex)
○ Read Diagnostic Information	Service ID A9 (hex)
○ Device Control by Identifier	Service ID AE (hex)
○ Read Data by Packed Identifier	Service ID AA (hex)

Supported KWP2000 diagnosis services

○ Start Diagnostic Session	Service ID 10 (hex)
○ ECU Request	Service ID 11 (hex)
○ Read Failure Record Data Mode	Service ID 12 (hex)
○ Clear Diagnostic Information	Service ID 14 (hex)
○ Read Diagnostic Trouble Codes by Status	Service ID 18 (hex)
○ Request Status of Diagnostic Trouble Codes by Status	Service ID 19 (hex)
○ Read ECU Identification	Service ID 1A (hex)
○ Read Data by Local Identifier	Service ID 21 (hex)
○ Read Data by Common Identifier	Service ID 22 (hex)
○ Read Memory by Address	Service ID 23 (hex)
○ Security Access Service	Service ID 27 (hex)
○ Input Output Control by Local Identifier	Service ID 30 (hex)
○ Start Routine by Local Identifier	Service ID 31 (hex)
○ Stop Routine by Local Identifier	Service ID 32 (hex)
○ Write Data by Local Identifier	Service ID 3B (hex)
○ Tester Present	Service ID 3E (hex)
○ Start Communication Request	Service ID 81 (hex)
○ Stop Communication Request	Service ID 82 (hex)

Supported Class II diagnosis services

○ Initiate Diagnostic Operation	Service ID 10 (hex)
○ Clear Diagnostic Information	Service ID 14 (hex)
○ Request Status of Diagnostic Trouble Code	Service ID 17 (hex)
○ Request Status of Diagnostic Trouble Codes by Status	Service ID 19 (hex)
○ Return to Normal Operation	Service ID 20 (hex)
○ Request Diagnostic Data by Address	Service ID 23 (hex)
○ Request Diagnostic Data Packets	Service ID 2A (hex)
○ Dynamically Define Message	Service ID 2C (hex)
○ Write Data Block	Service ID 3B (hex)
○ Read Data Block	Service ID 3C (hex)
○ Test Device Present	Service ID 3F (hex)
○ Request Device Control	Service ID AE (hex)

Order number:

IME 3901301 XS DiagAPI